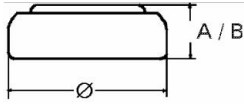


Type Number..... 397
Designation IEC..... SR 59
System..... Silver oxide/ Zinc /
 NaOH – Electrolyte / low drain



Nominal Voltage..... 1,55 V
Typical Capacity C..... 23 mAh
 Load 20 kOhm, at 20°C down to 1.2 V

Weight (approx.)..... 0,45 g
Volume..... 0,11 ccm
Coding..... Manufacturing Month/Year
 by Letter Code

Temperature Ranges min max.
 Storage..... 10°C 30°C
 Discharge..... -10°C 60°C

Dimensions min max.
 Diameter..... 7,55 7,9
 Height (A/B)..... 2,3 2,6

Segment..... Watch

Main Applications..... Watch
 Photo
 Electronic

Typical Capacities (at 20°C)

Discharge Type	Load	End Voltage:	1.2V
Continuous 24h/d, 7d/w	20000 Ω	Time [h]:	320
		Capacity [mAh]:	23
		Energy [MWh]:	33

No publication or circulation of data to third parties without consent of VARTA Consumer Batteries

All Data contained herein is for single cells For battery applications, performance data may vary from single cell data, depending on specific battery configuration