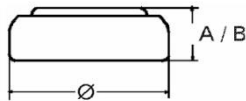


<b>Type Number</b> .....	386	
<b>Designation IEC</b> .....	SR 43	
<b>System</b> .....	Silver oxide/ Zinc / NaOH –Electrolyte / high drain	
<b>Nominal Voltage</b> .....	1.55 V	
<b>Typical Capacity C</b> .....	115 mAh	
<b>Temperature Ranges</b>	min	max.
Storage .....	10°C	30°C
Discharge.....	-10°C	60°C



<b>Dimensions</b>	min	max
Diameter.....	11,25	11,6
Height (A/B).....	3,80	4,2
<b>Weight (approx.)</b> .....	1,56 g	

**Typical Capacities (at 20°C)**

<b>Discharge Type</b> .....	Continuous 24h/d, 7d/w
<b>Load</b> .....	5600 Ω
<b>End Voltage</b> .....	1.2V
<b>Time</b> .....	790 h

**No publication or circulation of data to third parties without consent of VARTA Consumer Batteries**

All Data contained herein is for single cells.  
For battery applications, performance data may vary from single cell data, depending on specific battery configuration.