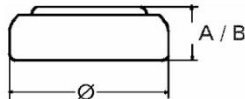


Type Number..... 379
Designation IEC..... SR 63
System..... Silver oxide/ Zinc /
 NaOH –Electrolyte / low drain

Nominal Voltage..... 1.55 V
Typical Capacity C..... 15 mAh

Temperature Ranges min max.
 Storage 10°C 30°C
 Discharge..... -10°C 60°C



Dimensions min max
 Diameter..... 5,65 5,80
 Height (A/B)..... 1,95 2,15

Weight (approx.)..... 0,23 g

Typical Capacities (at 20°C)

Discharge Type..... Continuous 24h/d, 7d/w
Load..... 68100 Ω
End Voltage..... 1.2V
Time..... 725 h

No publication or circulation of data to third parties without consent of VARTA Consumer Batteries

All Data contained herein is for single cells.
 For battery applications, performance data may vary from single cell data, depending on specific battery configuration.