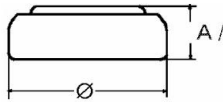


Type Number..... 20371
Designation IEC..... SR69
System..... Silver oxide/ Zinc /
 NaOH - Electrolyte



Nominal Voltage..... 1,55 V
Typical Capacity C..... 30 mAh
 (33 k Ω continuous at 20°C down
 to 1,2 Volts)

Weight (approx.)..... 0,57 g
Volume..... 0,14 ccm

Temperature Ranges min max.
 Storage..... 0°C 60°C
 Discharge..... 0°C 60°C

Dimensions min max.
 Diameter (A)..... 9,25 mm 9,50 mm
 Height (A/B)..... 1,85 mm 2,10 mm

Watch..... Watch

Typical Capacities (at 20°C)

Discharge Type	Load	End Voltage:	1.2	V
Continuous 24h/d, 7d/w	33000 Ω	Time:	710	h
		Capacity:	30	mAh
		Energy:	43	mWh

No publication or circulation of data to third parties without consent of VARTA Consumer Batteries

All Data contained herein is for single cells For battery applications, performance data may vary from single cell data, depending on specific battery configuration