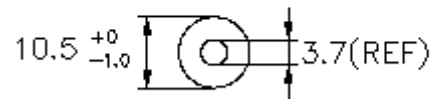
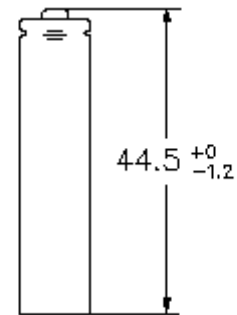


## DATA SHEET

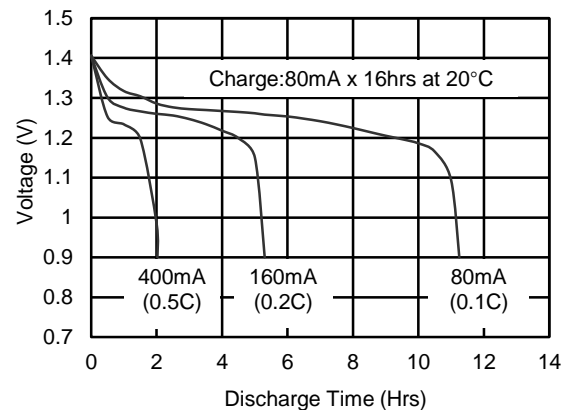
Model No.: GP85AAAHCB

<b>Type</b>	Rechargeable Nickel Metal Hydride Cylindrical Cell
<b>Nominal Dimension (with Sleeve)</b>	Diameter = 10.5mm Height = 44.5mm
<b>Applications</b>	Recommended discharge current 80 to 2400mA
<b>Nominal Voltage</b>	1.2V
<b>Capacity</b>	Rated: 800mAh Typical: 820mAh When discharged at 160mA to 1.0V at 20°C
<b>Charging Condition</b>	80mA for 16 hrs at 20°C
<b>Charge Retention</b>	80% of rated capacity after cell storage at 20°C for 24 months When discharged at 160mA to 1.0V at 20°C
<b>Fast Charge</b>	400mA to 800mA (0.5 to 1C) charge termination control recommended control parameters: -ΔV : 0-5mV DT/dt : 0.8°C/min (0.5 to 0.9C) 0.8 - 1°C/min (1C) TCO : 45 - 50°C Timer : 105% nominal input (for ref. only)
<b>Service Life</b>	>1000 cycles (IEC61951-2(2017)-7.5.1.2) >300 cycles (IEC61951-2(2017)-7.5.1.4)
<b>Continuous Overcharge</b>	80mA maximum current for 1 year. No conspicuous deformation and/or leakage
<b>Weight</b>	14.0g
<b>Internal Resistance</b>	Average 40mΩ upon fully charged (Max. 60mΩ) at 1000Hz
<b>Max. Charge Voltage</b>	1.5V at 80mA charging
<b>Ambient Temperature Range</b>	Standard Charge: 0 to 45°C Fast Charge: 10 to 45°C Discharge: -20 to 50°C Storage: -20 to 35°C Storage(1week): -20 to 60°C

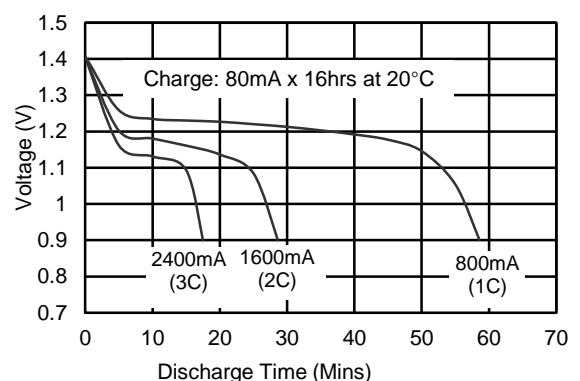


Unit: mm

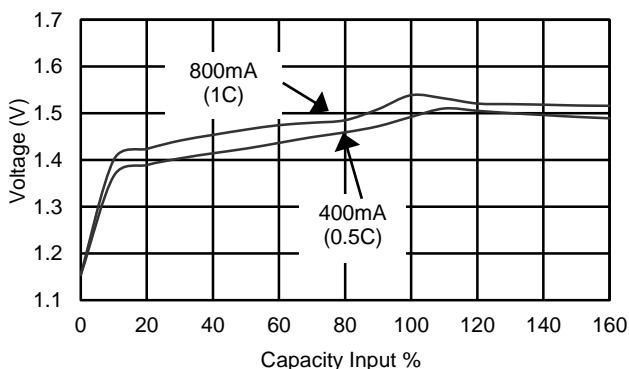
### Low Rate Discharge



### High Rate Discharge



### Fast Charge (Charge Control Required)



The above information is generally descriptive only and is not intended as guarantee or warranty. Cell and battery specifications are subject to change without notice. All descriptions or warranties are contained solely in specification sheets accompanying outside those described in this document.

TRS0494 rev.10