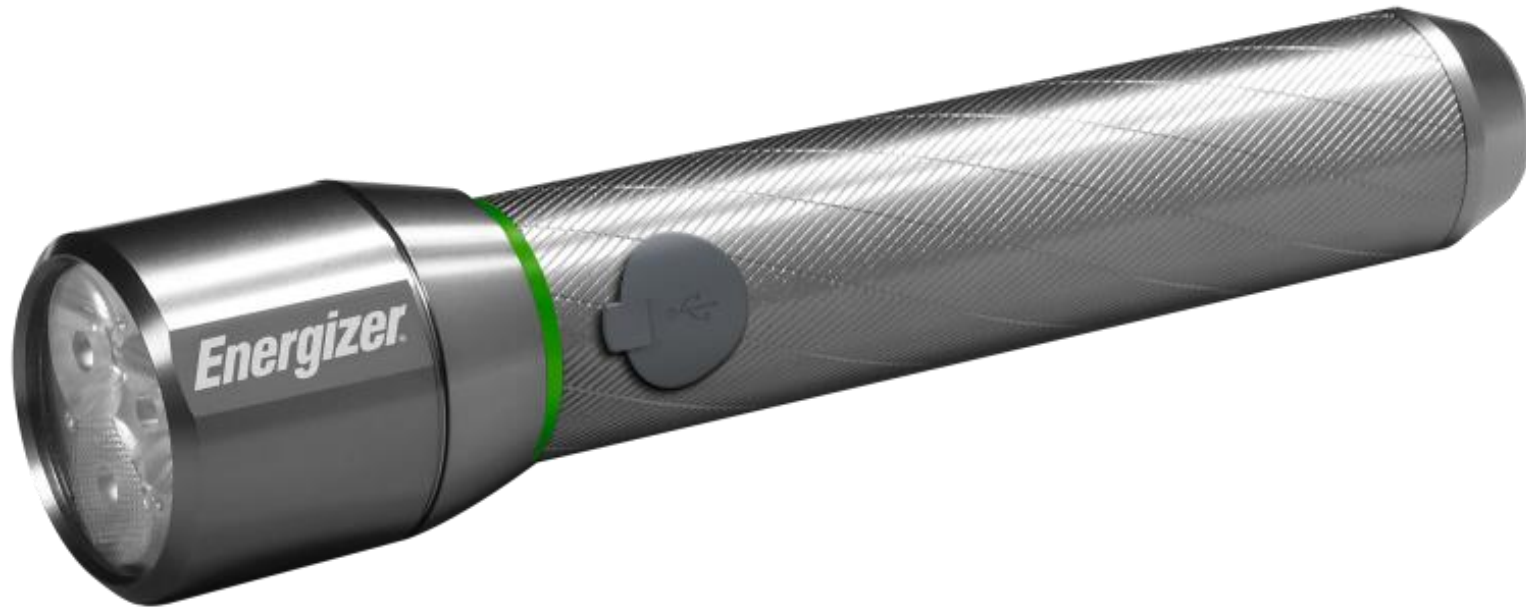




Product Image





## MARKETING INFORMATION AND CLAIMS

### Product Description

The *Energizer*® Vision HD Rechargeable Metal Light delivers high-performance innovation with exceptional light output. It is easy to use and features USB-in and out ports, which means it is rechargeable and can also charge devices, making it a great option for situations when you need to charge your device. This light is built with durable aircraft-grade aluminum which makes it a great tool for DIY projects and work tasks. The unique MAXVIZ technology enables users to experience sharp, high-definition performance with daylight color and wide uniform light output. Its brightness, durability and features make the *Energizer*® Vision HD Rechargeable Metal Light a dependable light for various tasks. Includes USB charging cable.

### DESIGN FEATURES AND BENEFITS

- ✓ Durable Aircraft Grade Aluminum
- ✓ Rechargeable
- ✓ USB Port Out: Charges Devices
- ✓ One press Digital Focusing
- ✓ Easy to use
- ✓ Shatterproof Lens

### PERFORMANCE FEATURES AND BENEFITS

- ✓ Exceptional light output for any task
- ✓ Up to 15X brighter than Standard LED Technology
- ✓ MAXVIZ Technology to deliver a wide, powerful beam and high-definition vision
- ✓ Powerful light even after a full smartphone charge\*\*
- ✓ Rechargeable – Fully charge in 8 hours\*
- ✓ Features LED Technology
- ✓ 4.25 hz strobe light
- ✓ Rechargeable Lithium Ion Battery (26650) – non-removable battery



## OPERATION

### Modes and Features

X	High Spot		High Flood (Wide)		Warm Mode		Red		Area High
	Medium Spot		Medium Flood (Wide)		Cool Mode		Red Flashing		Area Medium
X	Low Spot		Low Flood (Wide)		Warm and Cool Together		Green		Area Low
	Ultra Low Spot		Emergency Strobe (>5hz see warning copy)	X	Digital Focus (User Selectable-Spot, Flood Combination)		Green Flashing		Nightlight
	Press and Hold Dimming	x	Safety Flashing <5Hz				SOS		

### OPERATING INSTRUCTIONS

1. Press 1 times for High
2. Press 2 times for Low
3. Press and hold for during high or low to access the digital focus feature. The light will flash when the light is fully in either spot or flood. Release button when desired focus level is reached.
4. Press 3 times for flashing.
5. Press again for off.

### BATTERY CHANGING or CHARGING INSTRUCTIONS

1. Battery is not user replaceable.
2. To charge use included USB cord and plug light into any USB charging port.
3. Light must be turn off during charging.
4. Charging Indicator light is located near charging port.

1. A charge indicating LED is located by the USB port and will illuminate when the USB charging has started.  
Flashing = Charging  
Solid = Charging Complete

# Vision HD Rechargeable Metal Light

**PMHRL71**



## ENGINEERING DATA

### ANSI PERFORMANCE DATA

Lumens	Runtime	Beam Distance	Drop	Water Ingress

### BATTERY PERFORMANCE

Battery Type	Lithium Ion		
Modes	Lumens (lm)	Runtime (h)	Beam Distance (m)
High	1200	4	200
Low	250	8	-

### PRODUCT SPECIFICATIONS

<b>Weight:</b>	378	grams	13.33	ounces		
<b>Dimensions:</b>	Length		Width		Height	
	226.5	mm	48	mm	48	mm
	8.92	in	1.89	in	1.89	in

**Weight does not include user replaceable batteries (unless specified)**

### BATTERY SPECIFICATIONS

<b>Qty:</b>	1	<b>Size:</b>	26650	<b>Capacity:</b>	5000mAh	<b>User Replaceable?</b>	No
<b>Type:</b>	Rechargeable Lithium-Ion						

### ELECTRICAL CHARACTERISTICS

<b>Nominal Power Consumption:</b>	11.4 W		
<b>Batteries:</b>	1 Li ion 5000maH 26650 3.7V dc		
<b>LED Specifications:</b>	LED 3.0V cc / 3800 mA		
<b>Rechargeable Input Voltage:</b>	5V 1A	<b>Output Voltage:</b>	-
<b>Time to Charge</b>	8 hours		
<b>Contains magnets?</b>	<b>Shatterproof Lens:</b>		
No	Yes		
<b>LED CCT</b>	<b>LED CRI</b>		
5000K	70		
<b>Additional Ingress Protection</b>	<b>Other (Impact Testing, etc)</b>		
-	-		



## Regulatory Information

### CERTIFICATES AND COMPLIANCE

#### Global Certifications

<b>X</b>	EMC EN62471	Global
<b>X</b>	FCC	Tested on all product globally required for USA only.
	ASTM F963 Ages 3+	Global- All products marketed to children

#### Regional Certifications

	RCM	Australia-Rechargeable products		NOM	Mexico—All Lights		CNS	Taiwan-All rechargeable products
	EAC	EU-Rechargeable products		InMetro	Brazil-AC Plug In Rechargeable		KC Mark	South Korea-All rechargeable products
				UL/S Mark	Argentina-AC Plug In Rechargeable			
				Triman Logo	France—All lights			



### REQUIRED REGULATORY INFO

Tested according to ANSI FL1 Standards.

This device complies with part 15 of the FCC Rules. Operation is subject to the following two conditions: (1) This device may not cause harmful interference, and (2) this device must accept any interference received, including interference that may cause undesired operation.

### PRODUCT WARNINGS and/or DISCLAIMERS

\* Light must be turned off while charging.

\*\* Based on an average smartphone battery of 1810 mAh capacity.